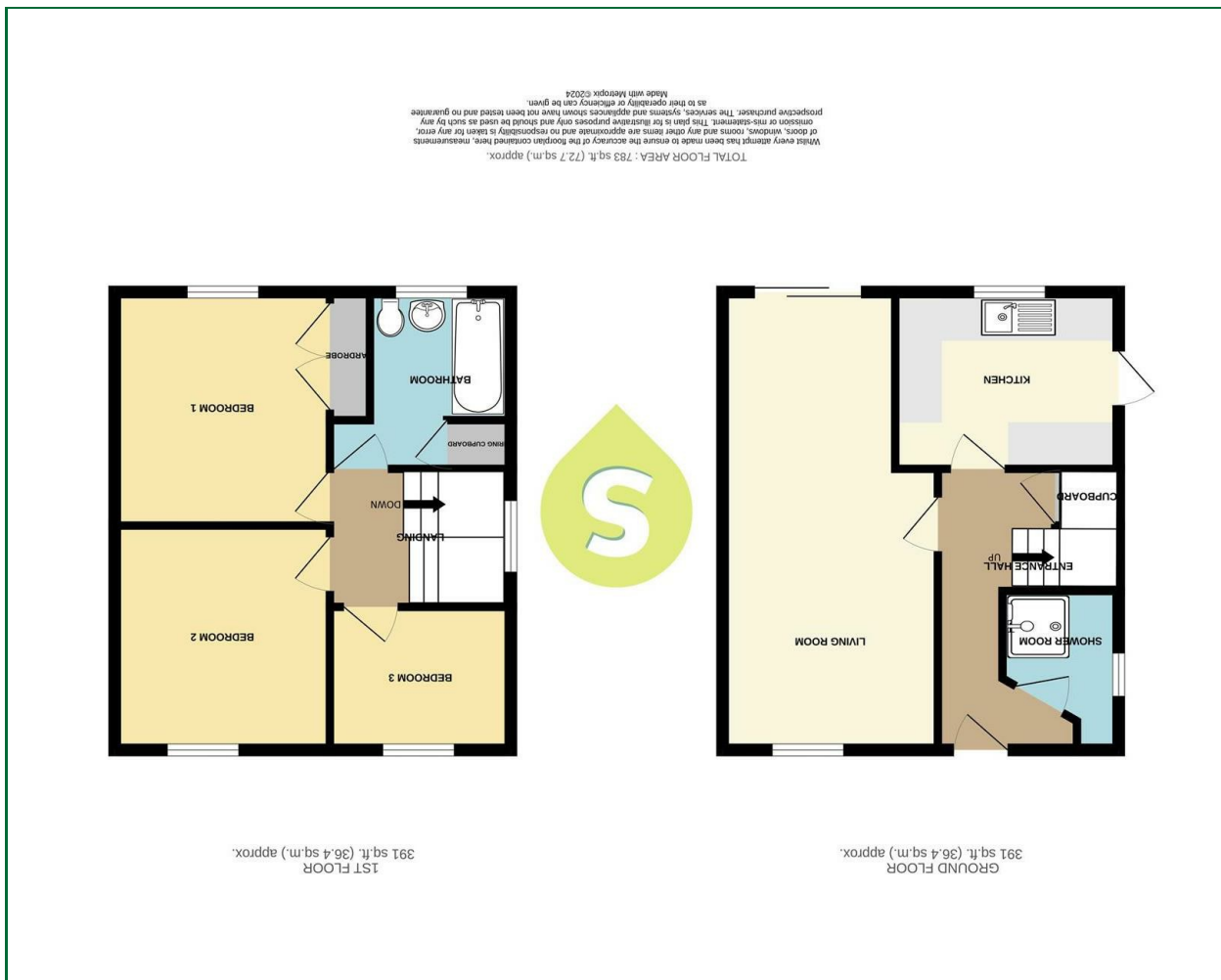




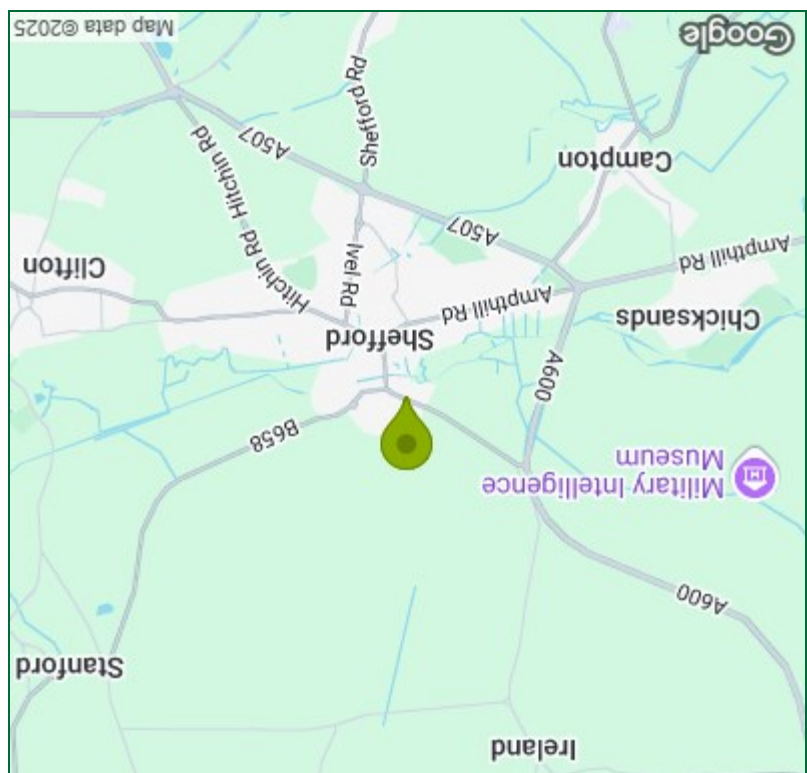
These particulars, whilst believed to be accurate are set out as a general outline only for guidance and do not constitute any part of an offer or contract. Intending purchasers should not rely on them as statements of representation of fact, but must satisfy themselves by inspection or otherwise as to their accuracy. No person in this firm's employment has the authority to make or give any representation or warranty in respect of the property.

Viewing

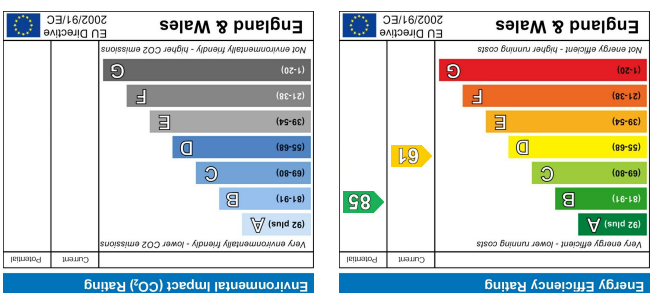
Please contact our Shefford Office on 01462 814087 if you wish to arrange a viewing appointment for this property or require further information.



Floor Plan



Area Map



Energy Efficiency Graph



Bedford Road,
Shefford | Beds
£325,000



Entrance Hall

Entrance door, stairs leading to first floor, under stairs cupboard.

Shower Room

Suite comprising of fully enclosed shower cubicle, heated towel rail, plumbing for washing machine, window to side.

Living Room

21'4" x 10'0"

Dual aspect room with window to front, sliding patio doors to rear garden, two radiators.

Kitchen

10'5" x 7'6"

Range of base and eye level units with roll top work surfaces, inset stainless steel sink unit with mixer tap, free standing gas cooker, tiled splash back, plumbing for washing machine, tiled floor, door to garden, window to rear.

Landing

Window to side, access to loft space.

Bedroom One

10'7" x 10'2"

Window to rear, radiator, fitted double wardrobe.

Bedroom Two

10'4" x 10'2"

Window to front, radiator.

Bedroom Three

8'5" x 6'9"

Window to front, radiator.



Bathroom

White suite comprising of panel enclosed bath, low level w.c, pedestal wash hand basin, fully tiled walls, window to rear, airing cupboard housing hot water tank.

Front Garden

Block paved driveway providing off road parking, gated access to rear garden.

Rear Garden

A fully enclosed garden laid mainly to lawn, concrete path extending to rear and leading to garage.

Garage

Up and over door, additional parking space in front of garage.

Agents Notes

Freehold

Council Tax Band C.

